

April 10, 1928.

1,665,280

A. H. RZEPPA

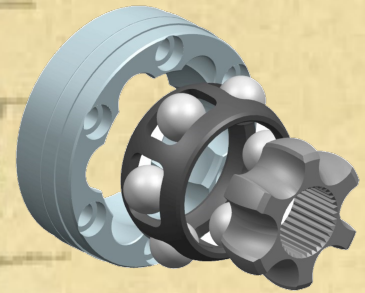
UNIVERSAL JOINT

11 Apr 2, 1927

2 Sheets-Sheet 1

KMDrive

Performance CV Joints



Custom and Standard CV joint designs
for Motorsports and Racing applications

INVENTOR

Alfred H. Rzeppa
Parker & Barton
ATTORNEYS

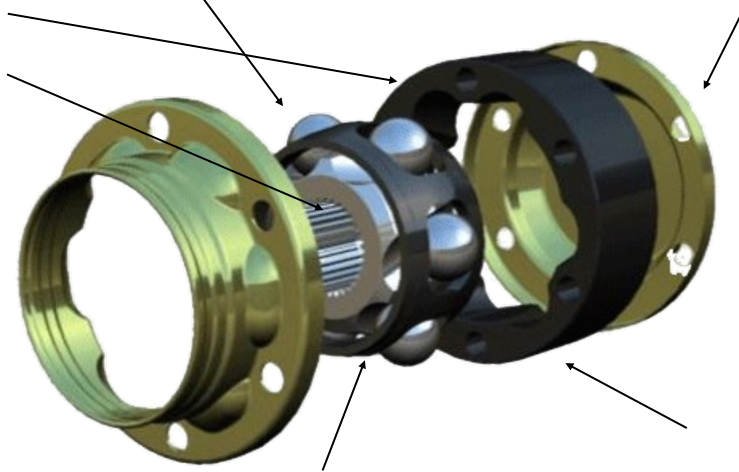
Disc Joint Components

KMDrive
Performance CV Joints

52100 Precision ball bearings

**Stamped steel grease cap
for lubricant retention**

**All 300M
construction**



**300 M steel cage provides 3X shock load
capacity of standard designs**

**Optimized track profile
increases torque capacity
15% over current designs**

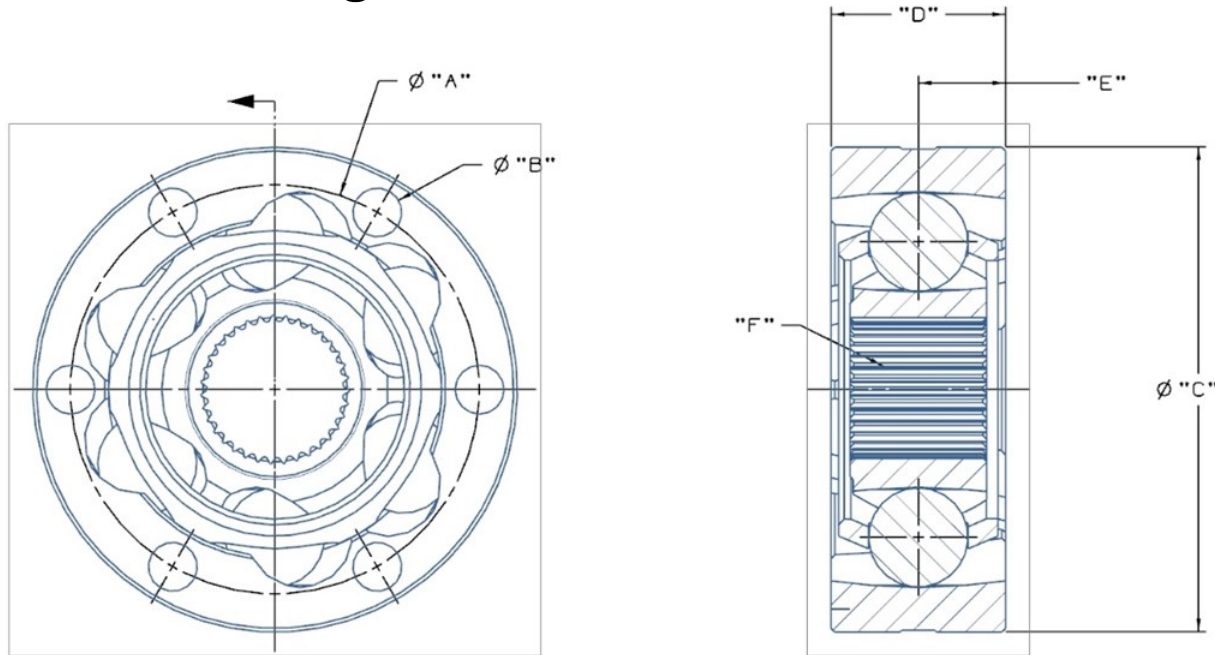


- ♦ Military grade Thermoplastic Boots
- ♦ Extreme Durability and Impact Resistance
- ♦ Tooled and Made in USA

KALYANI MOBILITY DRIVELINES



VL Standard Plunge CV Joints

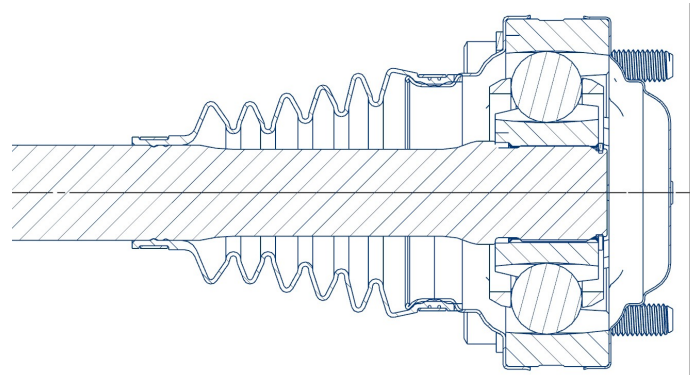


MOTORSPORT STD PLUNGE DISK

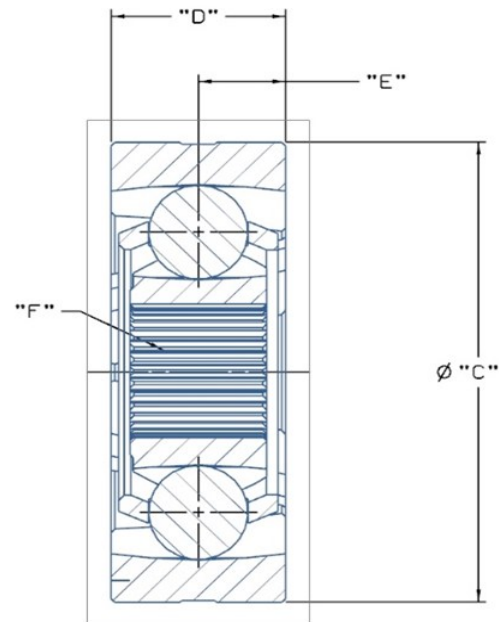
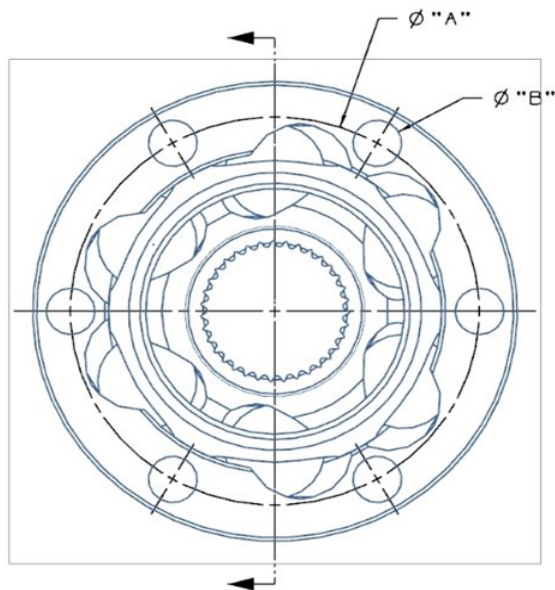
PART NUMBER	CV SIZE	ϕA mm[in]	ϕB mm[in]	ϕC mm[in]	D mm[in]	E mm[in]	F SPLINE	MAX ANGLE*	PLUNGE mm [in]	MATERIAL	RACE PREP	MAX TORQUE
CVMS00010	934	108[4.252]	12.9[.507]	128[5.039]	46[1.811]	23[0.906]	33	28	± 12.5 [.500]	STD	NO	7,000Nm
CVMS00013	934HD	108[4.252]	12.9[.507]	128[5.039]	46[1.811]	23[0.906]	35	28	± 12.5 [.500]	300M	YES	7,800Nm
CVMS00025	30	128[5.039]	12.9[.507]	148[5.827]	52[2.047]	28[1.102]	33	28	± 12.5 [.500]	STD	NO	11,000Nm
CVMS00021	30HD	128[5.039]	12.9[.507]	148[5.827]	52[2.047]	28[1.102]	33	28	± 12.5 [.500]	300M	YES	11,800Nm

*MAX ANGLE ACHIEVED WITH BOOT OVER JOINT

- ◆ Directly Interchangeable with 934/935 Designs
- ◆ High Strength Cage
- ◆ 15% More Torque Capacity
- ◆ 300 M Race Ready Versions
- ◆ Finned and lightened versions available



VL Long Plunge CV Joints

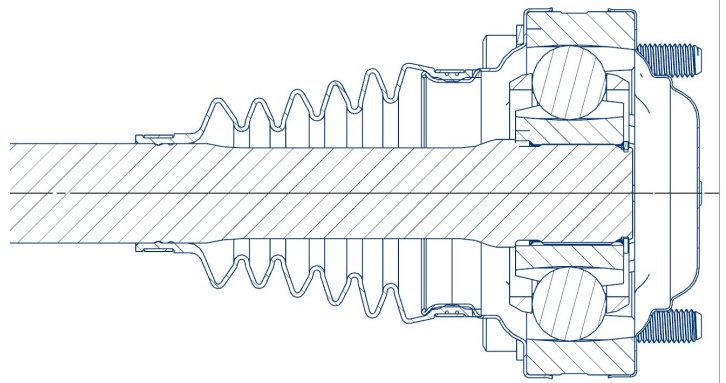


MOTORSPORT LONG PLUNGE DISK

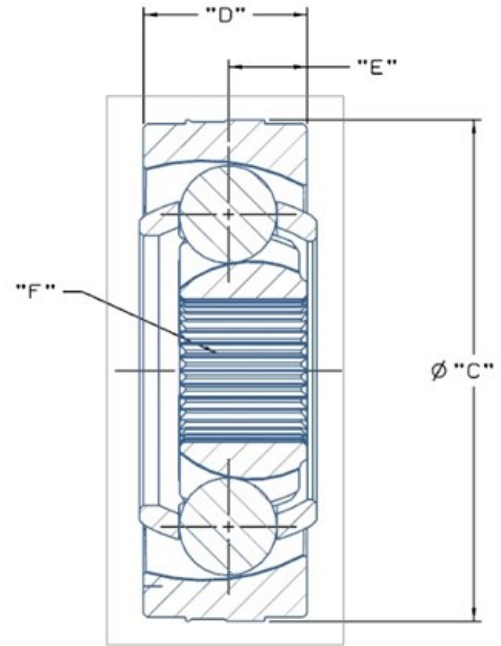
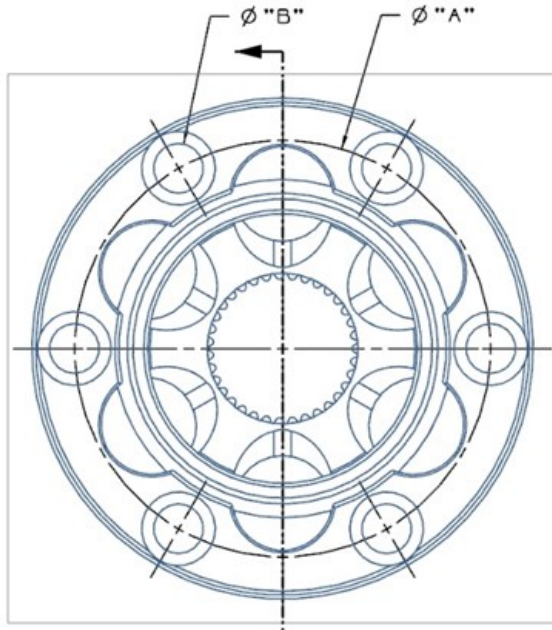
PART NUMBER	CV SIZE	ϕA mm[in]	ϕB mm[in]	ϕC mm[in]	D mm[in]	E mm[in]	F SPLINE	MAX	TOTAL PLUNGE mm [in]	MATERIAL	RACE	MAX
CVMS00009	934	108[4.252]	12.9[.507]	128[5.039]	38[1.496]	23[0.906]	33	22	52[2.050]	STD	NO	7,000Nm
CVMS00012	934HD	108[4.252]	12.9[.507]	128[5.039]	38[1.496]	23[0.906]	35	22	52[2.050]	300M	YES	7,800Nm
CVMS00029	8500	128[5.039]	12.9[.507]	148[5.827]	49.3[1.939]	25.3[.994]	33	25	61.5[2.421]	STD	NO	8,500Nm
CVMS00027	30	128[5.039]	12.9[.507]	148[5.827]	50[1.969]	30[1.173]	33	22	58[2.283]	STD	NO	11,000Nm
CVMS00028	30HD	128[5.039]	12.9[.507]	148[5.827]	50[1.969]	30[1.173]	33	22	58[2.283]	300M	YES	11,800Nm

*MAX ANGLE ACHIEVED WITH BOOT CARRIER AND BOOT INSTALLED AS A COMPLETE PACKAGE

- ◆ Extra long plunge +2 inches
- ◆ High shock load design
- ◆ All 300M Race Ready Versions
- ◆ 15% MoreTorque Capacity
- ◆ Made in the USA
- ◆ Finned and lightened versions available



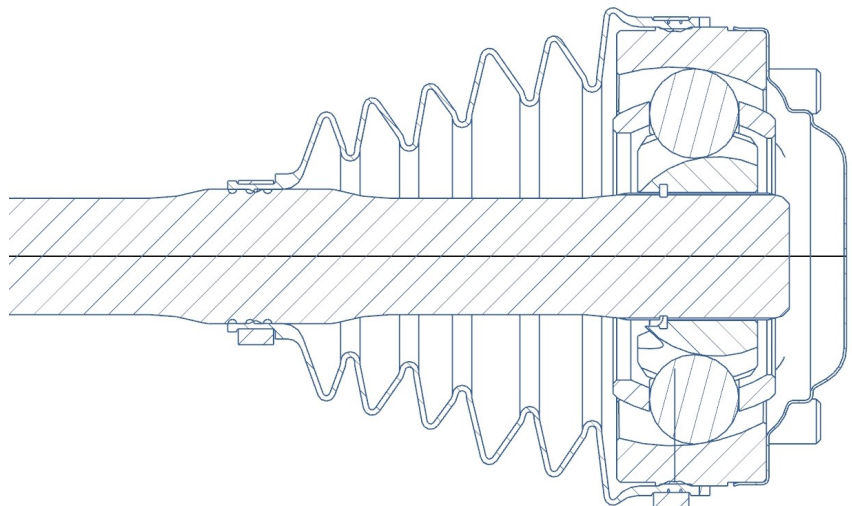
Rzeppa Fixed Center CV Joints



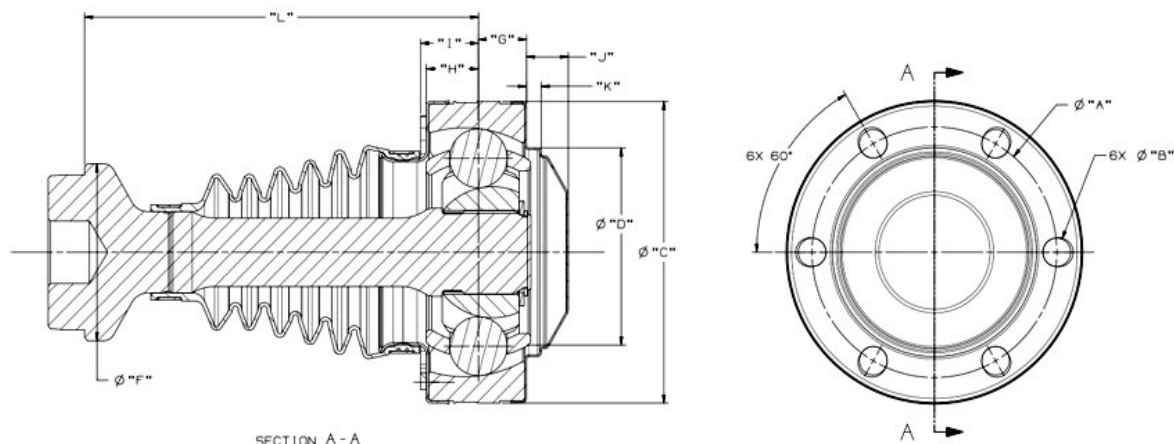
MOTORSPORT FIXED JOINT DISK

PART NUMBER	CV SIZE	ϕA mm[in]	ϕB mm[in]	ϕC mm[in]	D mm[in]	E mm[in]	F SPLINE	MAX ANGLE	CUSTOM FEATURES	MATERIAL	RACE PREP	MAX TORQUE
CVMS00011	934	108[4.252]	12.9[.507]	128[5.039]	42.5[1.673]	20.5[0.807]	33	45		STD	NO	7,000Nm
CVMS00014	934HD	108[4.252]	12.9[.507]	128[5.039]	42.5[1.673]	20.5[0.807]	35	45		300M	YES	7,800Nm
CVMS00018	934HD	108[4.252]	12.9[.507]	128[5.039]	42.5[1.673]	20.5[0.807]	35	45	C-BORE	300M	YES	7,800Nm
CVMS00026	30	128[5.039]	12.9[.507]	148[5.827]	56[2.205]	28[1.102]	35	45		STD	NO	11,000Nm
CVMS00022	30HD	128[5.039]	12.9[.507]	148[5.827]	56[2.205]	28[1.102]	35	45		300M	YES	11,800Nm

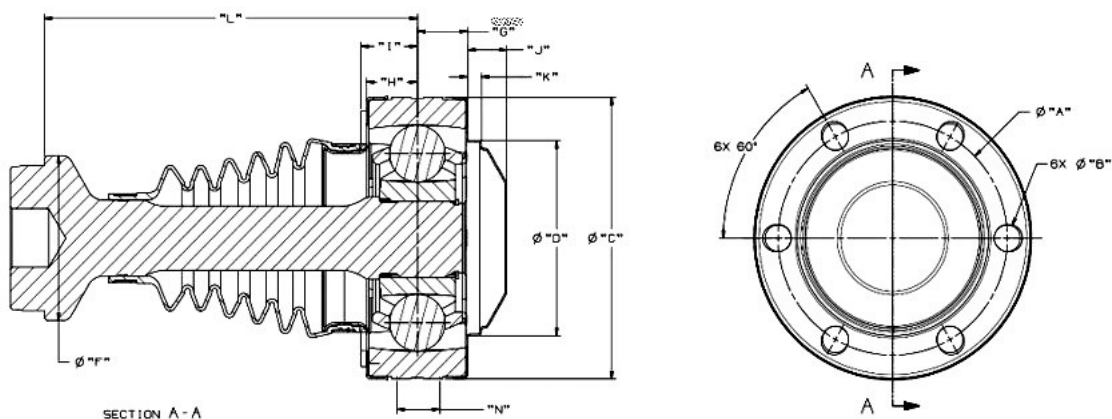
- ♦ High angle capacity
- ♦ High shock load design
- ♦ All 300M Race Ready Versions
- ♦ Made in the USA
- ♦ Finned and lightened versions available



High Angle, High Speed CV Propshaft Joints



		PROPSHAFT FIXED JOINT													
		1)	2)	3)MAX	Ø"A"	Ø"B" +.15	Ø"C"	Ø"D" +.05	Ø"F"	"G"	"H"	"I"	"J"	"K"	"L"
PART NUMBER:	JOINT SIZE	[Nm]	[RPM]	[DEG]	[mm]	[mm]	[mm]	[mm]	[mm]	[mm]	[mm]	[mm]	[mm]	[mm]	[mm]
CV2BHS00077	21	7,000	5,000	12°	108	12.25	130	90	76.2	23.7	23	25.5	18.5	6.5	173.8
CV4BHS00043	30	11,000	5,000	15°	128	12.2	148	112	101.6	31.05	29.2	31.75	22.75	10	215.1
CV5BHS00036	32	16,000	4,700	17°	155.5	16.4	184	127	114.7	25.5	34.4	N/A	31.5	18	213.9



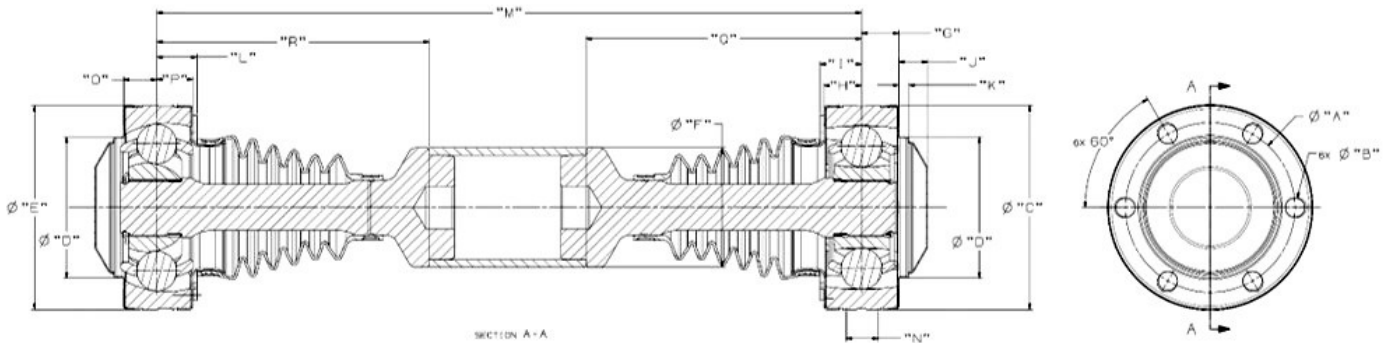
		PROPSHAFT PLUNGE JOINT													
		1)	2)	3)MAX	Ø"A"	Ø"B" +.15	Ø"C"	Ø"D" +.05	Ø"F"	"G"	"H"	"I"	"J"	"K"	"L"
P/N:	JOINT SIZE	[Nm]	[RPM]	[DEG]	[mm]	[mm]	[mm]	[mm]	[mm]	[mm]	[mm]	[mm]	[mm]	[mm]	[mm]
CV2BHS00073	21	7,000	5,000	12°	108	12.25	130	90	76.2	23.7	24	26.5	18.5	6.5	173.8
CV4BHS00044	30	11,000	5,000	15°	128	12.2	148	112	101.6	31.05	21.4	23.95	22.75	10	207.3
CV5BHS00038	32	16,000	4,700	17°	155.5	16.4	184	127	114.7	25.5	32.4	N/A	31.5	18	227

Contact KMD Eng. For applications requiring operating angles higher than chart

KALYANI MOBILITY DRIVELINES



High Angle, High Speed CV Propshafts



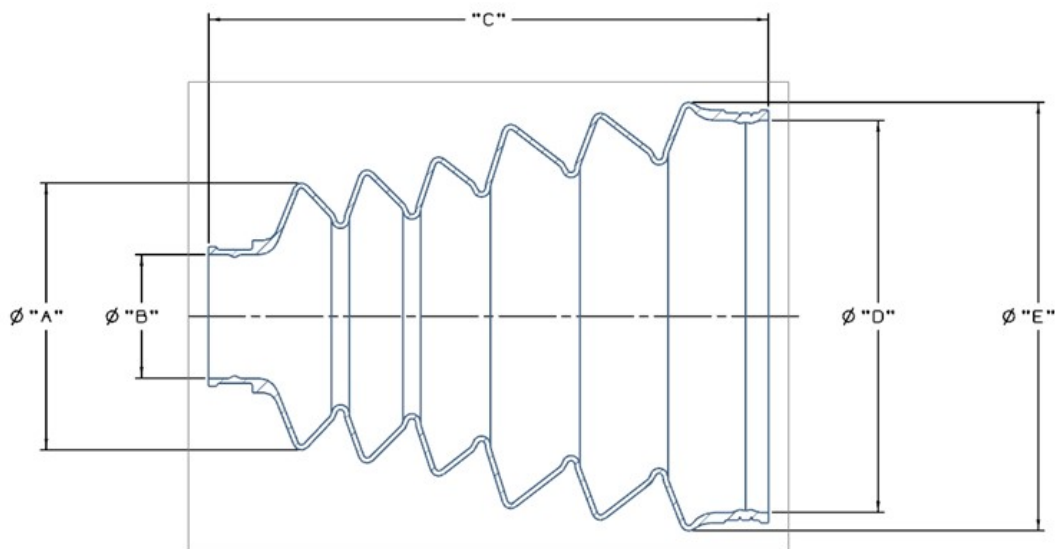
PROPSHAFTS											
	1)	2)	3)MAX	4)MAX	Ø"A"	Ø"B" +/- .15	Ø"C"	Ø"D" +.05	Ø"E"	Ø"F"	"G"
JOINT SIZE	[Nm]	[RPM]	[DEG]	[DEG]	[mm]	[mm]	[mm]	[mm]	[mm]	[mm]	[mm]
21	7,000	5,000	12°	12°	108	12.25	130	90	130	76.2	23.7
30	11,000	5,000	15°	15°	128	12.2	148	112	153	101.6	31.05
32	16,000	4,700	17°	17°	155.5	16.4	184	127	184	114.7	25.5
	"H"	"I"	"J"	"K"	"L"	"M" MIN	"N" +/- STROKE	"O"	"P"	"Q"	"R"
JOINT SIZE	[mm]	[mm]	[mm]	[mm]	[mm]	[mm]	[mm]	[mm]	[mm]	[mm]	[mm]
21	24	26.5	18.5	6.5	25.5	387	+14/-14	21.2	23	175.8	173.8
30	21.4	23.95	22.75	10	31.75	475	+30/-22.5	29.5	29.2	207.3	215.1
32	32.4	N/A	31.5	18	N/A	493	+20/-20	33.5	34.4	227	213.9

No Need for Equal Angle Alignment

Smooth Operation

No Maintenance

Increased Life of Support Bearing and Seals



MOTORSPORT CV JOINT BOOTS

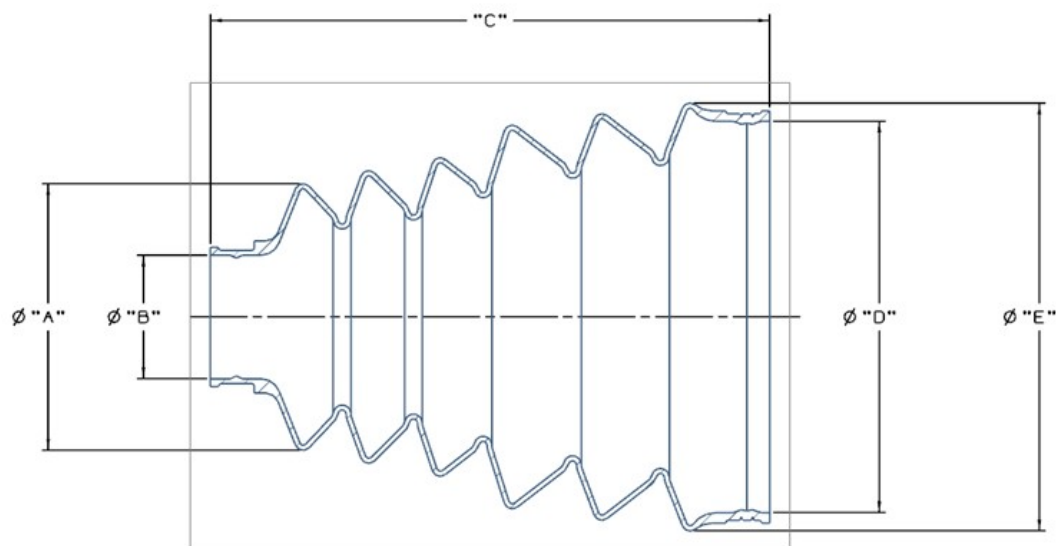
PART NUMBER	ØA mm[in]	ØB mm[in]	C mm[in] FREE LENGTH	ØD mm[in]	ØE mm[in]	MATERIAL
CV203004	82[3.228]	38[1.496]	172[6.772]	120.4[4.739]	131.6[5.181]	MIL SPEC TPE
CV203010	67.2[2.646]	35[1.378]	125.5[4.941]	81.6[3.213]	91.8[3.612]	MIL SPEC TPE
CV303004	93[3.661]	48.2[1.898]	19.5[5.492]	102.5[4.035]	114[4.488]	MIL SPEC TPE
CV303006	82[3.228]	38[1.496]	172[6.772]	130[5.118]	141[5.551]	MIL SPEC TPE

- ♦ State of the Art High Angle CV Joint Boots
- ♦ Military Grade Thermoplastic
- ♦ Almost Puncture Proof
- ♦ Superior Tear Strength
- ♦ Improved Fatigue Performance



Disc Joint Components

KMDrive
Performance CV Joints



BOOT #	Large Clamp	Size (mm)	Small Clamp	Size(mm)
CV203004:	CV211013	128.5	CV211004	43
CV203010:	CV211001	86.8	CV211002	41
CV303004:	CV211009	110.5	CV511005	55
CV303006:	CV211008	135.5	CV211004	43



Oetiker Clamp Tool

#14100337

Or

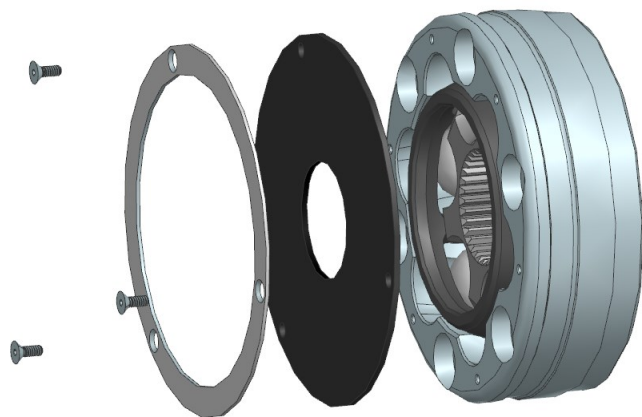
#14100069

This tool must be used to properly close the clamps used with KMD Thermo Plastic Elastomer (TPE) Boots



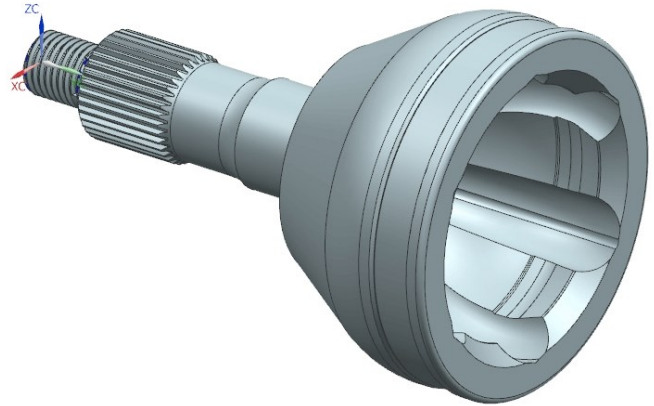
Extreme Performance Grease
High Temperature
Low Friction
Convenient Cartridges
Part # EM-0001

Simple Design
Easy to Install
Helps Keep
Grease Inside the
Joint

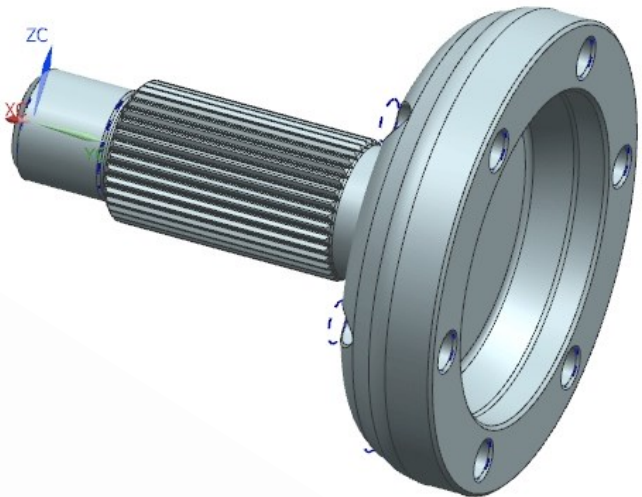


Other Custom Parts

**Custom Fixed Joint Rzeppa Bells
Available for Spidertrax and
other OEM Wheel Designs**



**Custom Diff Output Shafts and
Flanges Available for Spidertrax
and other
OEM Wheel
Designs**



High Angle Ball Spline Half Shaft



For price and delivery on
motorsports joints and parts.

Contact:

Head Office Address:



Kalyani Mobility Drivelines 1015 W. Cedar Street Standish, MI 48658



(989) 846-1000

Dave Moore, Eng. Mgr.

Alex Miller, Motor Sport Product Engineer



Sales@kmdrivelines.com



www.kmdrivelines.com